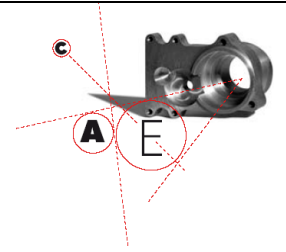


# CAE PERFORMANCE PRODUCTS

7 Main Road Castlemaine, VIC. 3450  
T 03 5472 1442  
F 03 5472 4111  
E info@caenterprises.com.au  
W www.caeperformanceproducts.com.au



**RP-PWR-HOLDEN-HK-T-G**

## Customer Instructions – Front mounted Power Rack and Pinion Kit to suit Holden HK-HT-HG Sedan, Ute and Wagons.

PARTS		MAY-2019
CAE-456 Sub Assembly	Holden HK-T-G Power Rack Mounting Pads suit Front Steer	
2 x TE-3051	Tie Rod End	
1 x STEER COUPLING	Collapsible Steering Shaft	
1 x RP-PWR-HOLDEN-HK-T-G		
Fitting Instructions		



**Fig 1**

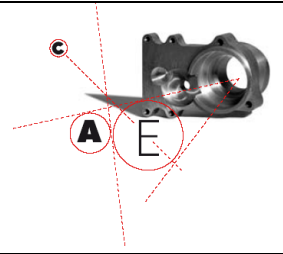
Shows the mounting brackets welded in to place.

Dismantle front end if required & clean around the area when mounting brackets are to be welded onto front end.

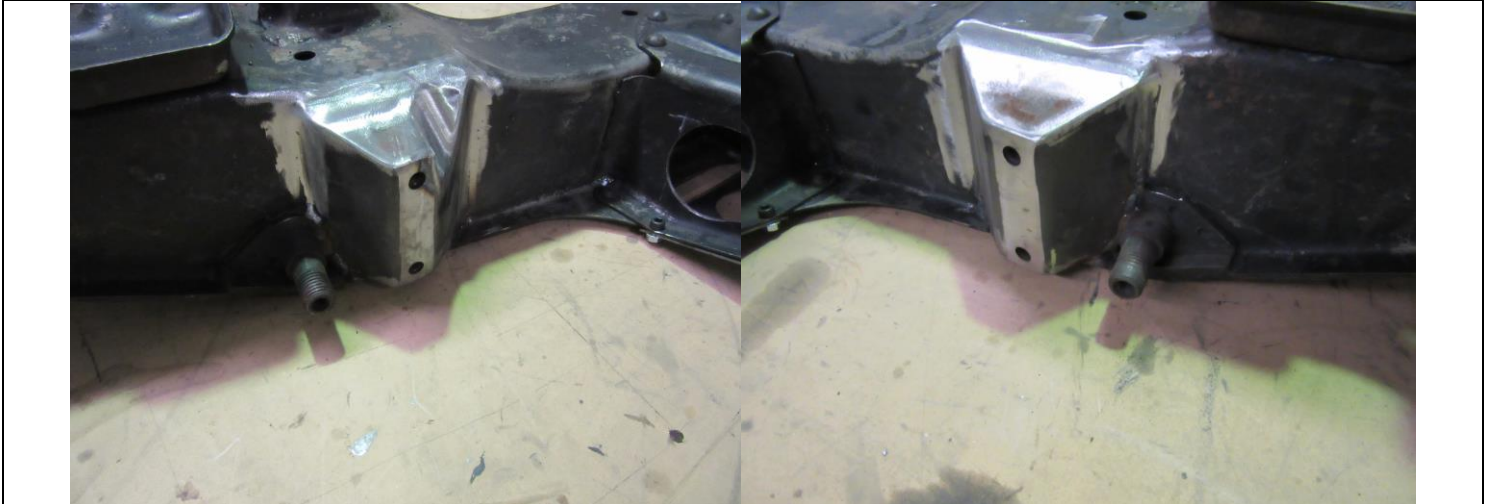
Trim brackets as required to follow contour of front end & tack/weld as per Fig 1 & Fig 2

# CAE PERFORMANCE PRODUCTS

7 Main Road Castlemaine, VIC. 3450  
T 03 5472 1442  
F 03 5472 4111  
E info@caenterprises.com.au  
W www.caeperformanceproducts.com.au

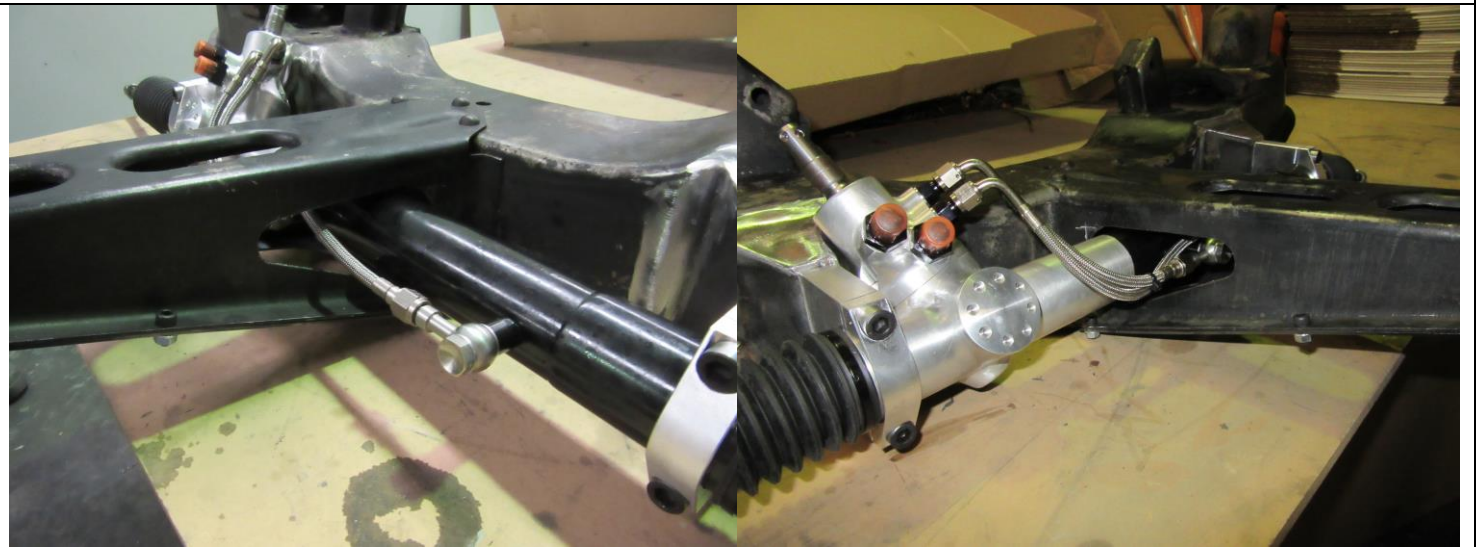


**RP-PWR-HOLDEN-HK-T-G**



**Fig 2**

The above pictures show the mounting position of the Left and Right Mounting Brackets.



**Fig 3**

The front end snout must have the left and right side hole enlarged as shown.

Variations have been found in the front end outriggers/snout. Modifications of holes are required to pass Power Rack through

As shown in **Fig 3 & Fig 4**

# CAE PERFORMANCE PRODUCTS

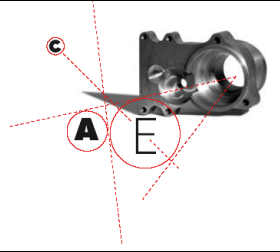
7 Main Road Castlemaine, VIC. 3450

T 03 5472 1442

F 03 5472 4111

E [info@caenterprises.com.au](mailto:info@caenterprises.com.au)

W [www.caeperformanceproducts.com.au](http://www.caeperformanceproducts.com.au)



**RP-PWR-HOLDEN-HK-T-G**



**Fig 4**



**Fig 5**

Shows the snout strengthening plate. Clamp plate to snout and use as a template to drill all the holes.

## CAE PERFORMANCE PRODUCTS

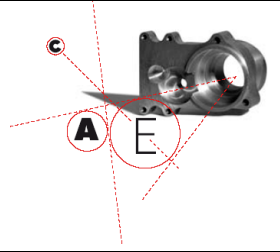
7 Main Road Castlemaine, VIC. 3450

T 03 5472 1442

F 03 5472 4111

E [info@caenterprises.com.au](mailto:info@caenterprises.com.au)

W [www.caeperformanceproducts.com.au](http://www.caeperformanceproducts.com.au)



RP-PWR-HOLDEN-HK-T-G



1. Pressure Line – 2. Return Line

## CAE PERFORMANCE PRODUCTS

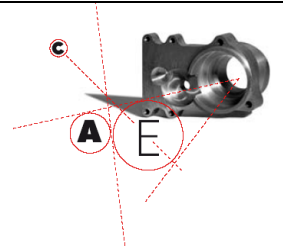
7 Main Road Castlemaine, VIC. 3450

T 03 5472 1442

F 03 5472 4111

E info@caenterprises.com.au

W www.caepformanceproducts.com.au



RP-PWR-HOLDEN-HK-T-G



Please Note: We recommend to use Steering Arms from either HQ-WB short (as above) or HK-HT-HG & HQ-HJ long arms.

These arms must be modified by CAE to accept the new tie-rod ends supplied in the kit.

Install new arms facing forward on correct sides.

If using short arms (as above) the sway bar link perch must be ground off and replaced with a bracket made by CAE. (RP-HK-T-G-SWAY-BAR)

This will stop binding of suspension components. Long steering arms will not require this modification.

**Note:** You will need to swap stub axles over as the brake calipers will have to be mounted at rear.

## **CAE PERFORMANCE PRODUCTS**

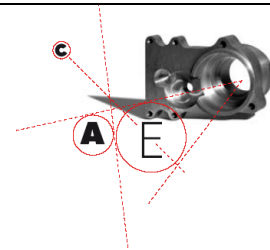
7 Main Road Castlemaine, VIC. 3450

T 03 5472 1442

F 03 5472 4111

E [info@caenterprises.com.au](mailto:info@caenterprises.com.au)

W [www.caeperformanceproducts.com.au](http://www.caeperformanceproducts.com.au)



**RP-PWR-HOLDEN-HK-T-G**



HQ long Steering arm installation shown above.

Once you have assembled all parts, move suspension through its arc, check that all parts clear & no binding occurs.

# CAE PERFORMANCE PRODUCTS

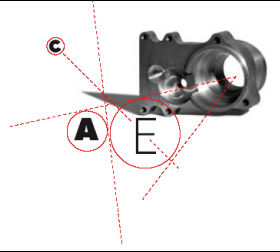
7 Main Road Castlemaine, VIC. 3450

T 03 5472 1442

F 03 5472 4111

E info@caenterprises.com.au

W www.caepformanceproducts.com.au



**RP-PWR-HOLDEN-HK-T-G**



Sub-Frame will need to be relieved to clear steering shaft as per picture above